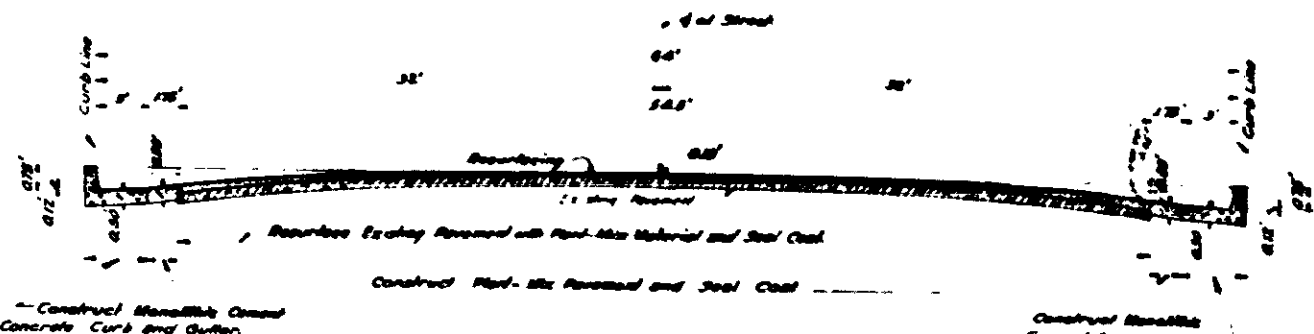
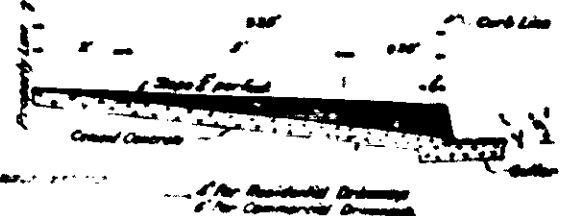


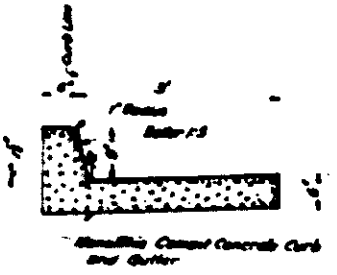
TYPICAL SECTION OF PAVEMENT
FROM STATION 0+25 TO STATION 1+64.89
Scale - Horizontal 1/2" = 1' - Vertical 1/4" = 1'



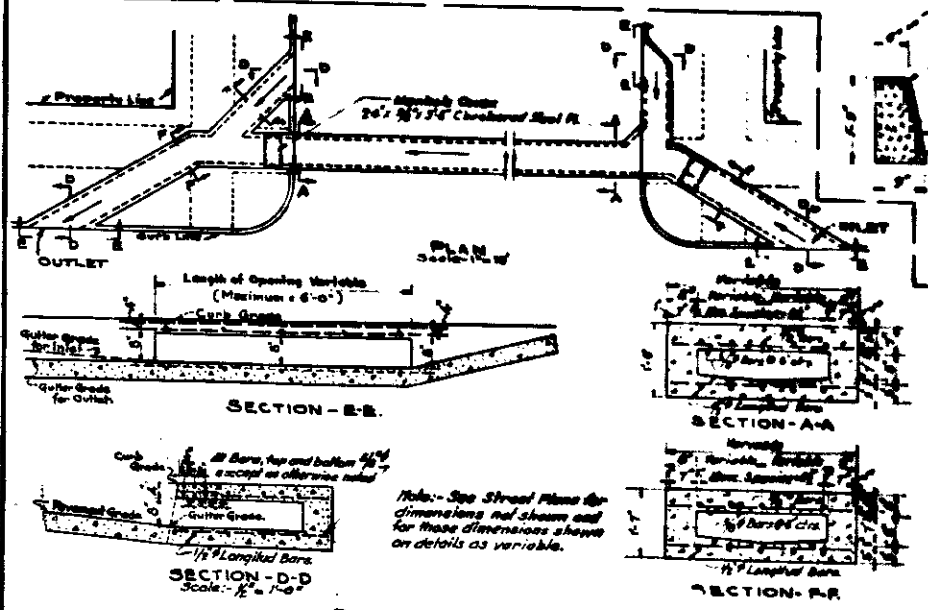
TYPICAL SECTION OF PAVEMENT
FROM STATION 1+64.89 TO STATION 1+67.31
Scale - Horizontal 1/2" = 1' - Vertical 1/4" = 1'



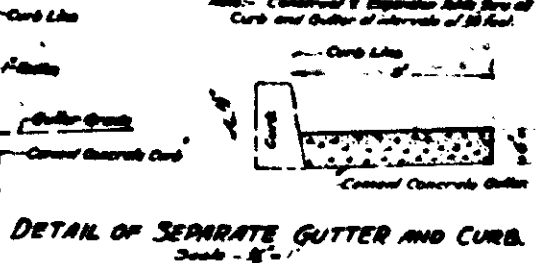
TYPICAL SECTION OF DRIVEWAY
Scale 1/2" = 1'



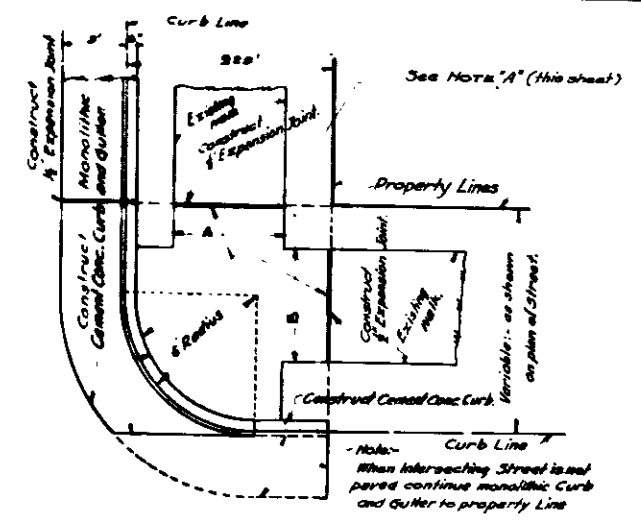
TYPICAL SECTION OF CURB AND GUTTER.
Scale 1/2" = 1'



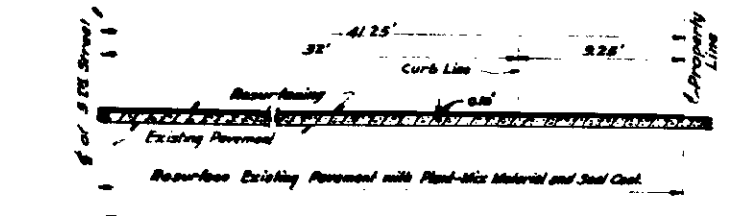
-DETAIL OF TYPICAL CULVERT-
Scale: 1/2" = 1'-0"



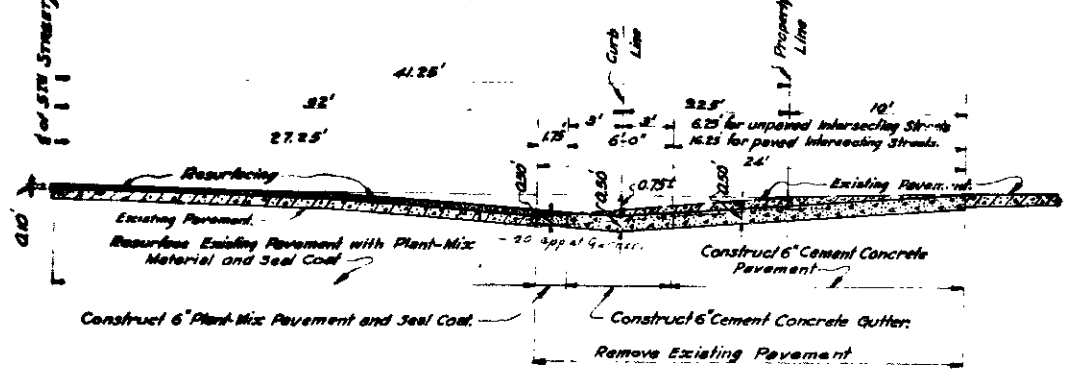
DETAIL OF SEPARATE GUTTER AND CURB.
Scale: 1/2" = 1'



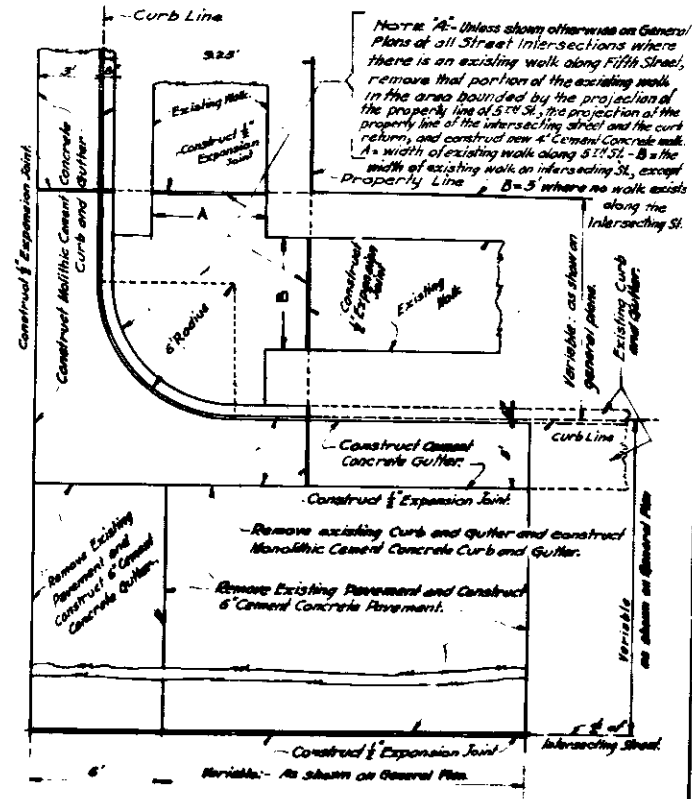
TYPICAL PLAN OF CURB AND GUTTER RETURN
Scale 1/2" = 1'



TYPICAL HALF SECTION OF PAVEMENT ON CENTER LINE OF INTERSECTING STREET. (FOR INTERSECTIONS WITHOUT A GUTTER CROSSING THE INTERSECTING STREET.)
Scale - Horizontal 1/2" = 1' - Vertical 1/4" = 1'

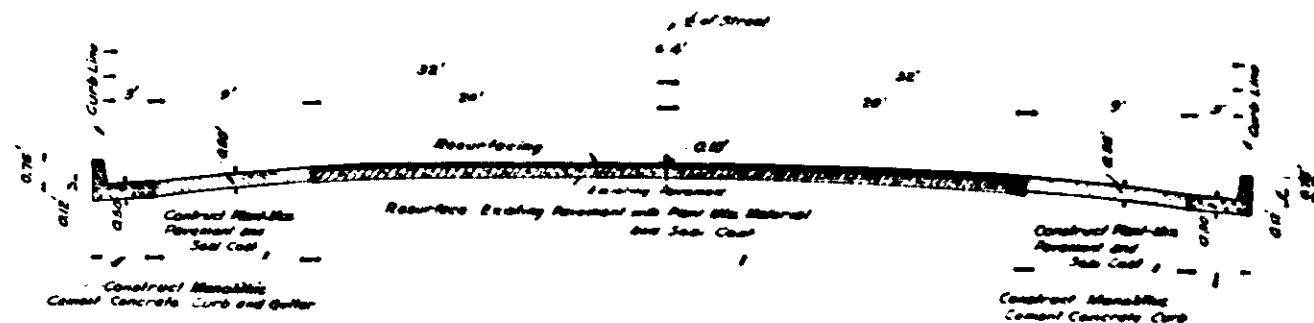


TYPICAL HALF SECTION OF PAVEMENT ON CENTER LINE OF INTERSECTING STREET FOR INTERSECTIONS WITH GUTTER CROSSING THE INTERSECTING STREET.
Scale: Horizontal 1/2" = 1' - Vertical 1/4" = 1'

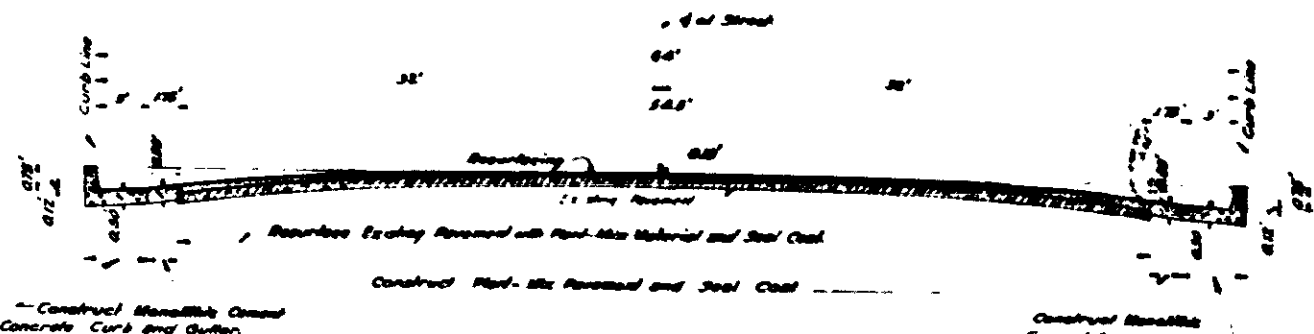


TYPICAL PLAN OF INTERSECTION WITH GUTTER CROSSING THE INTERSECTING STREET.
Scale: 1/2" = 1'

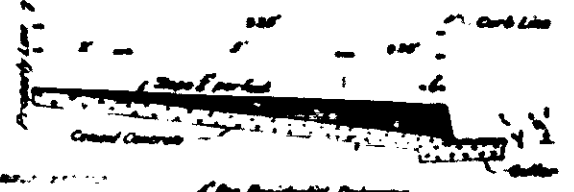
PLAN No 1578
FOR THE IMPROVEMENT OF
FIFTH STREET
FROM
FLORES STREET
TO
WATERMAN AVENUE
CITY OF SAN BERNARDINO, CALIF.
Edgar T. Ham,
City Engineer,
Civil Engr. Cert. No. 1488.
Date March 1948.
Sheet No. 1 of 3 sheets



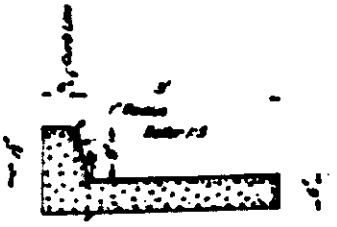
TYPICAL SECTION OF PAVEMENT
FROM STATION 0+25 TO STATION 1+64.89
Scale - Horizontal 1/2" = 1' - Vertical 1/4" = 1'



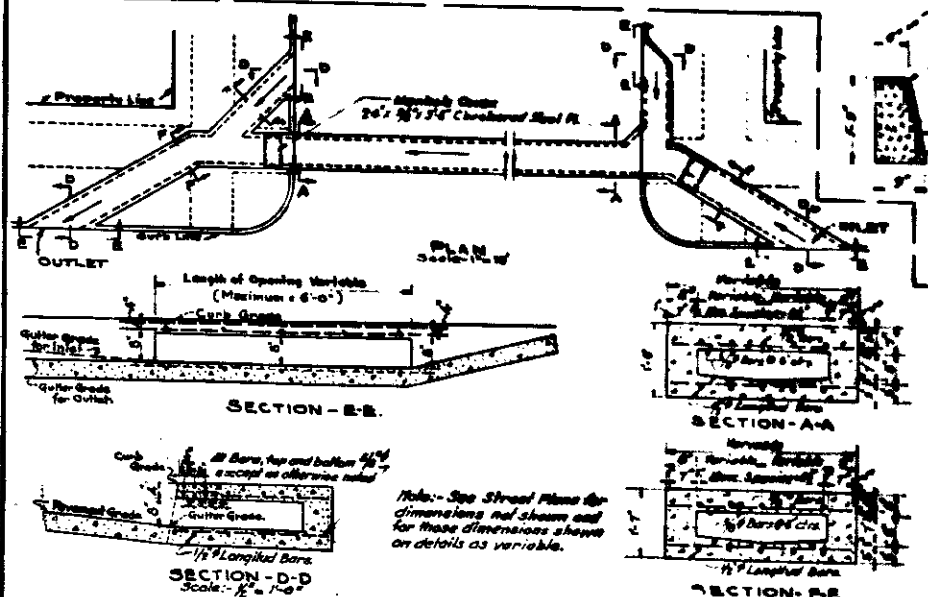
TYPICAL SECTION OF PAVEMENT
FROM STATION 1+64.89 TO STATION 1+67.31
Scale - Horizontal 1/2" = 1' - Vertical 1/4" = 1'



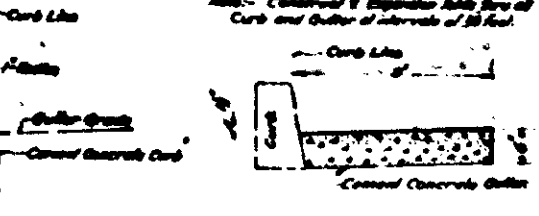
TYPICAL SECTION OF DRIVEWAY
Scale 1/2" = 1'



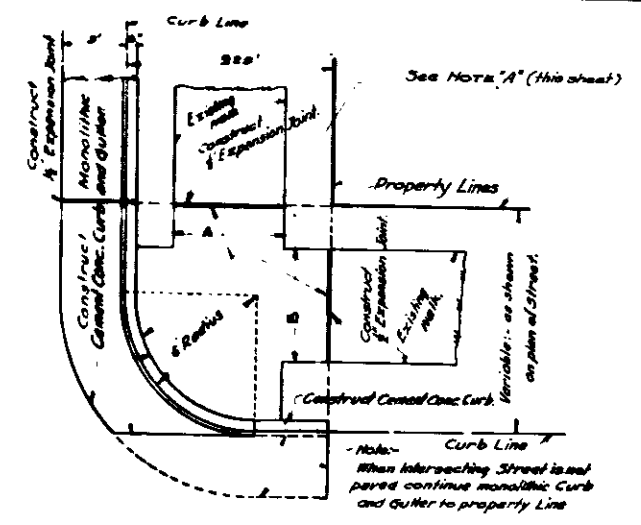
TYPICAL SECTION OF CURB AND GUTTER.
Scale 1/2" = 1'



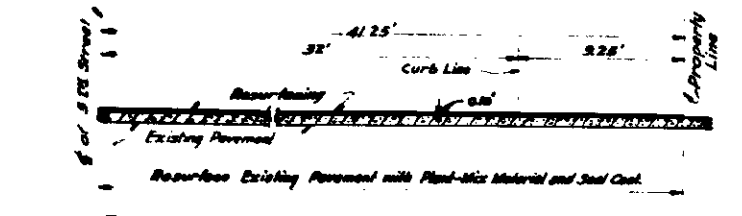
-DETAIL OF TYPICAL CULVERT-
Scale: 1/2" = 1'



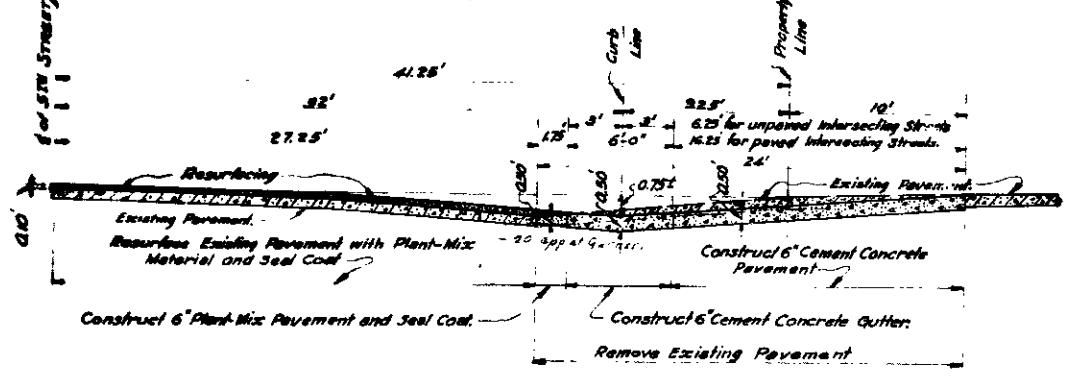
DETAIL OF SEPARATE GUTTER AND CURB.
Scale: 1/2" = 1'



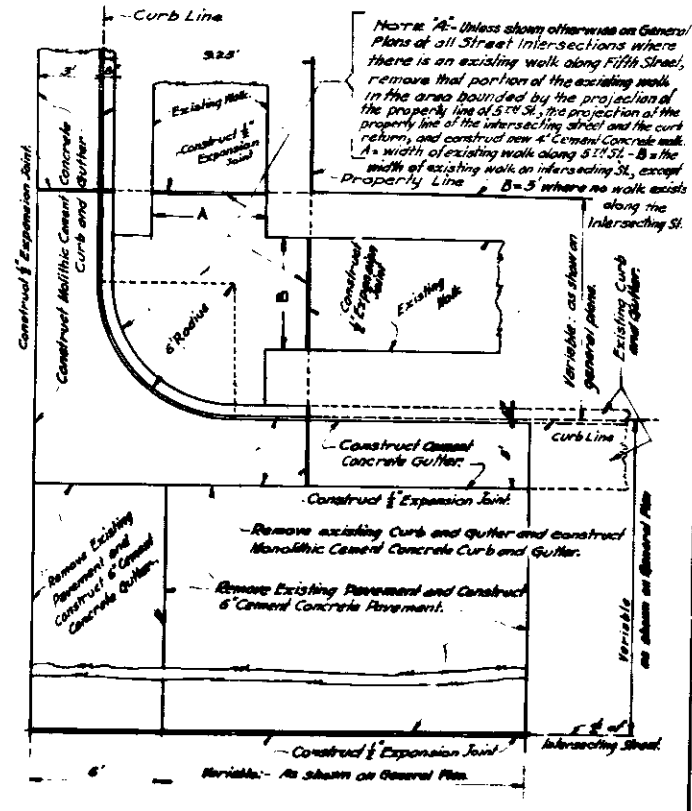
TYPICAL PLAN OF CURB AND GUTTER RETURN
Scale 1/2" = 1'



TYPICAL HALF SECTION OF PAVEMENT ON CENTER LINE OF INTERSECTING STREET. (FOR INTERSECTIONS WITHOUT A GUTTER CROSSING THE INTERSECTING STREET.)
Scale - Horizontal 1/2" = 1' - Vertical 1/4" = 1'

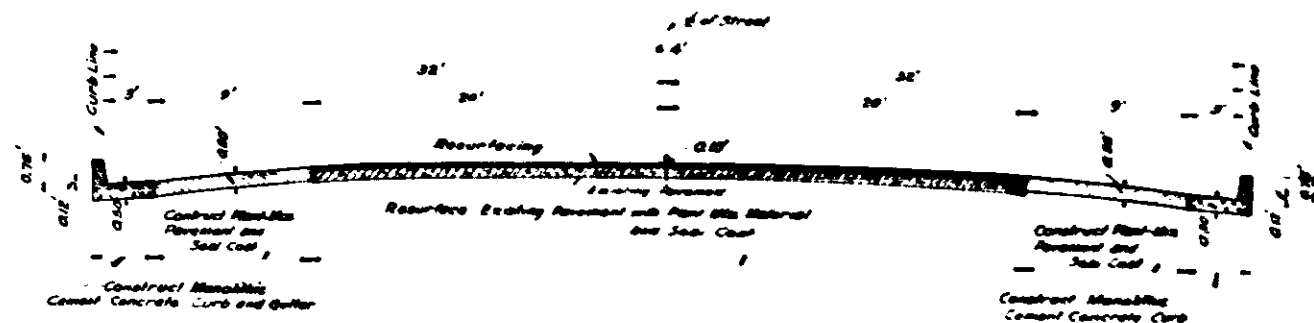


TYPICAL HALF SECTION OF PAVEMENT ON CENTER LINE OF INTERSECTING STREET FOR INTERSECTIONS WITH GUTTER CROSSING THE INTERSECTING STREET.
Scale: Horizontal 1/2" = 1' - Vertical 1/4" = 1'

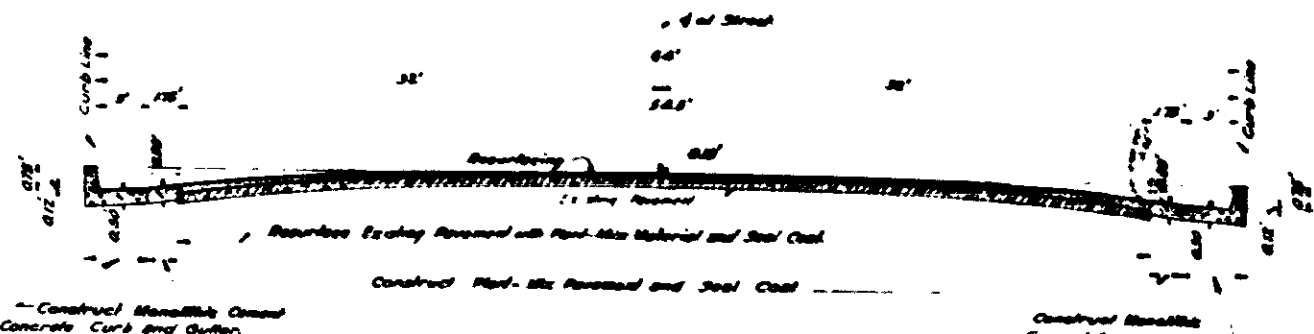


TYPICAL PLAN OF INTERSECTION WITH GUTTER CROSSING THE INTERSECTING STREET.
Scale: 1/2" = 1'

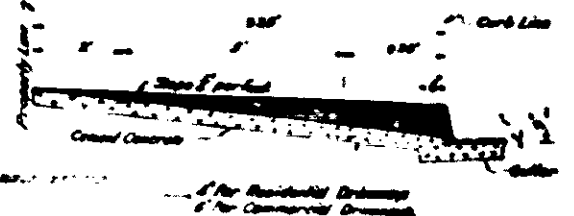
PLAN NO 1578
FOR THE IMPROVEMENT OF
FIFTH STREET
FROM
FLORES STREET
TO
WATERMAN AVENUE
CITY OF SAN BERNARDINO, CALIF.
Edgar T. Ham,
City Engineer,
Civil Engr. Cert. No. 1488.
Date March 1948.
Sheet No. 1 of 3



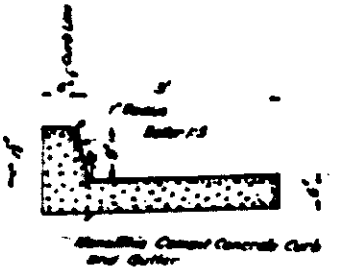
TYPICAL SECTION OF PAVEMENT
FROM STATION 0+25 TO STATION 1+64.89
Scale - Horizontal 1/2" = 1' - Vertical 1/4" = 1'



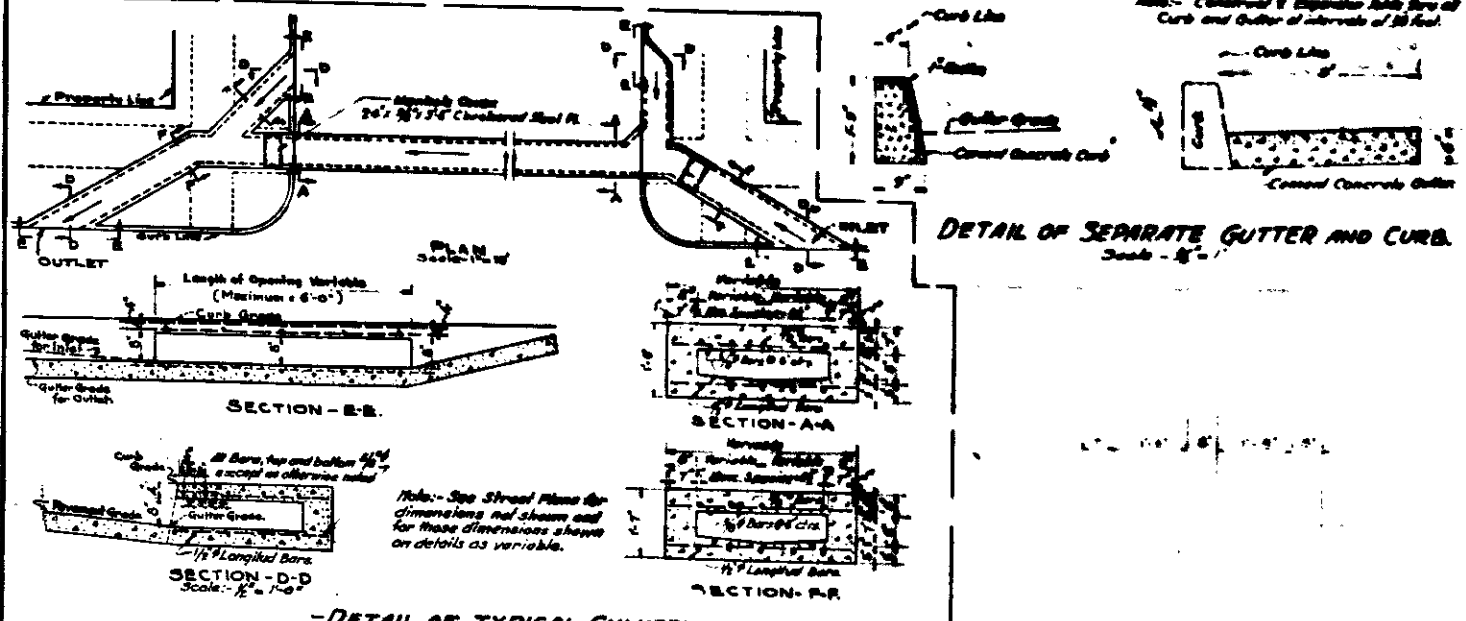
TYPICAL SECTION OF PAVEMENT
FROM STATION 1+64.89 TO STATION 1+67.31
Scale - Horizontal 1/2" = 1' - Vertical 1/4" = 1'



TYPICAL SECTION OF DRIVEWAY
Scale 1/2" = 1'

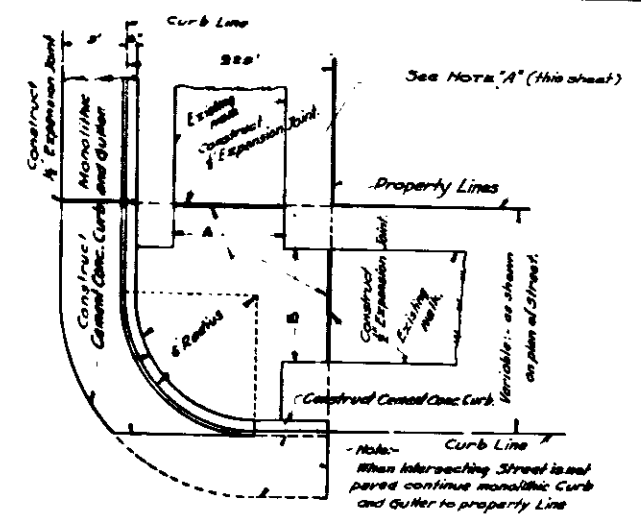


TYPICAL SECTION OF CURB AND GUTTER.
Scale 1/2" = 1'

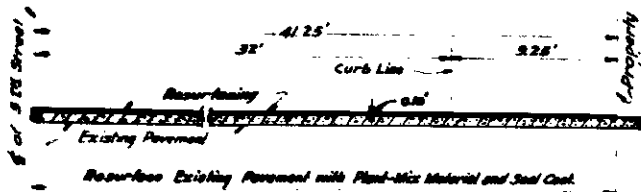


DETAIL OF SEPARATE GUTTER AND CURB.
Scale - 1/2" = 1'

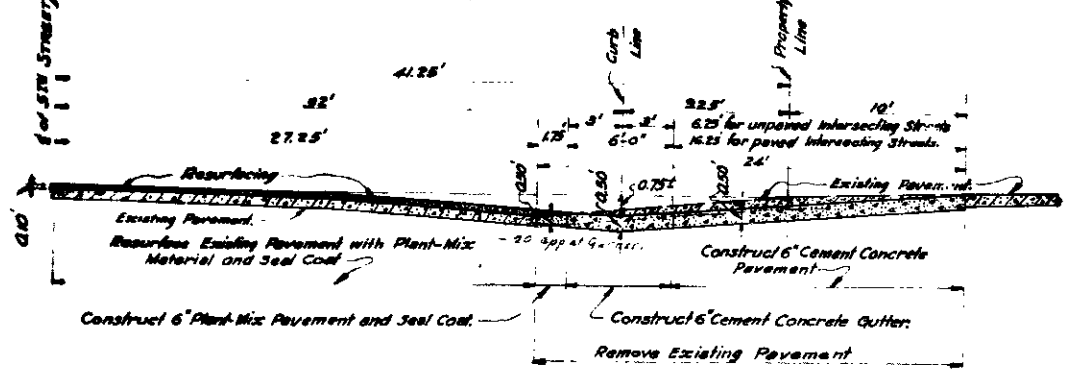
-DETAIL OF TYPICAL CULVERT-



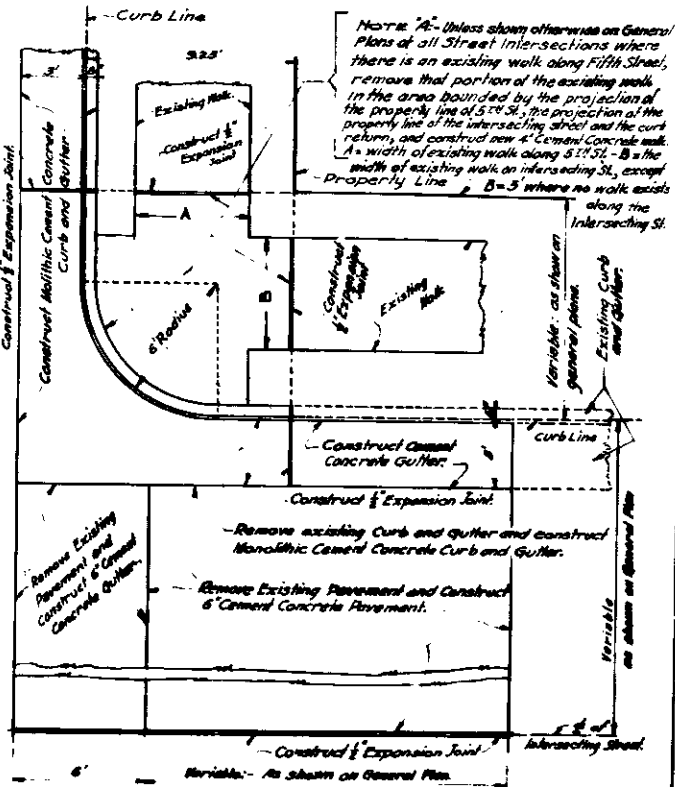
TYPICAL PLAN OF CURB AND GUTTER RETURN
Scale 1/2" = 1'



TYPICAL HALF SECTION OF PAVEMENT ON CENTER LINE OF INTERSECTING STREET. (FOR INTERSECTIONS WITHOUT A GUTTER CROSSING THE INTERSECTING STREET.)
Scale - Horizontal 1/2" = 1' - Vertical 1/4" = 1'



TYPICAL HALF SECTION OF PAVEMENT ON CENTER LINE OF INTERSECTING STREET FOR INTERSECTIONS WITH GUTTER CROSSING THE INTERSECTING STREET.
Scale - Horizontal 1/2" = 1' - Vertical 1/4" = 1'



TYPICAL PLAN OF INTERSECTION WITH GUTTER CROSSING THE INTERSECTING STREET.
Scale - 1/2" = 1'

PLAN NO 1578
FOR THE IMPROVEMENT OF
FIFTH STREET
FROM
FLORES STREET
TO
WATERMAN AVENUE
CITY OF SAN BERNARDINO, CALIF.
Edgar T. Ham,
City Engineer,
Civil Engr. Cert. No. 1488.
Date March 1948.
Sheet No. 1 of 3 sheets